

University | Centers of Excellence

In affiliation with UCSF Fresno

2022

OUTPATIENT OFFICE
DIRECTORY

UniversityMDs.com



CCFMG
Central California Faculty Medical Group

Caring for today's patients.
Teaching tomorrow's doctors.

In affiliation with UCSF Fresno

LOCATIONS SERVING THE CENTRAL VALLEY



CARDIOLOGY



GASTROENTEROLOGY



VASCULAR SURGERY

- University Cardiovascular Center (Clovis)**
729 Medical Center Drive West, Suite 111 Clovis, CA 93611
559.666.1993 · 559.540.2957 fax
- University Cardiovascular Center (Fresno)**
2335 E. Kashian Lane, Suite 240 Fresno, CA 93701
559.320.0545 · 559.320.0550 fax
- University Dermatology Associates**
2335 E. Kashian Lane, Suite 410 Fresno, CA 93701
559.266.4100 · 559.266.4199 fax
- University Diabetes and Endocrine Specialists**
7085 N. Chestnut Ave., Suite 101 Fresno, CA 93720
559.323.9236 · 559.323.0294 fax
- University Pulmonary Associates**
2335 E. Kashian Lane, Suite 260 Fresno, CA 93701
559.256.5136 · 559.485.4504 fax
- University Gastroenterology and Hepatology Associates**
University Medicine Associates
University Rheumatology Associates
2335 E. Kashian Lane, Suite 280 Fresno, CA 93701
559.320.1090 · 559.320.0331 fax
- University Obstetrics and Gynecology Center**
2210 E. Illinois Ave., Suite 408 Fresno, CA 93701
559.443.2694 · 559.443.2696 fax
- University Orthopaedic Associates**
604 N. Magnolia Ave., Suite 100 Clovis, CA 93611
559.320.0531 · 559.320.0539 fax
- University Psychiatry Associates**
2210 E. Illinois Ave., Suite 401 Fresno, CA 93701
559.320.0580 · 559.320.0582 fax
- University Sleep and Pulmonary Associates**
6733 N. Willow Ave., Suite 107 Fresno, CA 93710
559.435.4700 · 559.298.7951 fax
- University Women’s Specialty Center**
2210 E. Illinois Ave., Suite 301 Fresno, CA 93701
559.320.0555 · 559.320.0558 fax
- Valley Vascular Surgery Associates**
1247 E. Alluvial Ave., Suite 101 Fresno, CA 93720
559.431.6226 · 559.440.9005 fax

Table of Contents

University Centers of Excellence Office Locations2

CCFMG Health Care in the Central Valley4

CCFMG Community Impact5

Cardiology6

Dermatology8

Diabetes10

Endocrinology10

Gastroenterology12

Hepatology12

Internal Medicine14

Rheumatology14

Obstetrics & Gynecology16,26

Orthopaedics18

Psychiatry20

Pulmonology22

Sleep Medicine & Pulmonology24

Women’s Perinatology26

Vascular Surgery & Endovascular Intervention28

UCSF Faculty in the Community30

Family Healthcare Network31

Community Cancer Institute32

Community Pediatric Services34

Community Gynecologic Oncology Specialists36

Community Specialty Surgery Associates37

Faculty Physicians In the News38

Index by Last Name39

***The UCOE Faculty Practice Site Directory was updated February 2022. Our directory is updated monthly and available online at universitymds.info/Directory-2022

CCFMG Health Care in the Central Valley

CCFMG is the largest multispecialty medical group in the Central Valley, providing half a million people in Fresno County with more than 552,000 patient visits. The geographical footprint of our services would not be possible without strong, reliable partnerships with other health care organizations. CCFMG works closely with more than 20 local hospitals, health care facilities, and organizations to ensure patients have access to the care they need close to home.

313,000+
Community Health System


Hospital Visits 176,000+
Emergency Dept. Visits 100,600+
CHP Offices 36,400+

10,300+
Fresno County








552,000+
Total CCFMG Patient Visits

106,100+
University Centers of Excellence

 **Centers of Excellence**
In affiliation with UCSF Fresno

119,600+
Federally Qualified Health Centers

 98,000+
 16,000+
 4,300+
 1,300+

3,200+
Additional Partners

 Madera Community Hospital
 U.S. Department of Veterans Affairs
VA Central California Health Care System
FRESNOSTATE
 Saint Agnes
A Member of Trinity Health

CCFMG Community Impact By The Numbers

With nearly 220 core faculty physicians and more than 100 advanced practice clinicians, CCFMG provides care in more than 80 specialties and subspecialties. In an area plagued with doctor shortages, this care is invaluable to our communities.

UCOE Specialty Practice Sites
12



2,010
Burn Patients Treated

COVID-19 Vaccines Administered
3,420



40-50%
UCSF Fresno Residency and Fellowship Graduates Stay in the Central Valley

COVID-19 Patients Treated
31,771



2,277
Babies Delivered

In affiliation with UCSF Fresno

We provide comprehensive, high-quality cardiovascular care to patients in the Central Valley.

Epic Referral Information

Cardiovascular REF12
Epic Department Name UCSF F UCC

Downloadable Fax Referral Form
universitymds.info/cardio

Clovis Office 559.666.1993
Fresno Office 559.320.0545
Referral Dept. 559.825.8467
Referral Fax 559.540.2957



Clovis Office
729 Medical Center Drive West, Suite 111
Clovis, CA 93611
universitymds.info/cardio-clovis
Office Directions



Fresno Office
2335 E. Kashian Lane, Suite 240
Fresno, CA 93701
Fax 559.320.0550
universitymds.info/cardio
Office Directions



Services

In addition to **cardiovascular disease management**, some of the **interventional cardiovascular** procedures we offer are:

- Advanced heart failure
- Angioplasty
- Arrhythmia monitoring
- Artificial heart left ventricular assist device (LVAD)
- Atrial ventricular ablation
- Cardiac stenting
- Cardiovascular stress tests
- Carotid and peripheral arterial testing
- Carotid ultrasound
- Echocardiography
- Heart transplant
- Holter monitoring
- Interventional cardiology
- Mitraclip
- Non-invasive peripheral atrial evaluations
- Pacemaker/defibrillator implantation
- Preventative to complex cardiology consultations
- Remote monitoring of cardiac devices
- Stress tests (nuclear and echo)
- Transcatheter aortic mitral valve replacement (TAVR) – Trans-aortic mitral valve replacement



MEDICAL DIRECTOR



Teresa Daniele, MD, FACC
Cardiovascular Disease, Advanced Imaging, Non-Invasive Cardiology, and Women's Heart Health
Chief of Cardiology, UCSF Fresno
Associate Clinical Professor, UCSF
Medical Director, Center for Women's Heart Health
Program Director, Adult Cardiovascular Disease Fellowship, UCSF Fresno
Epic ID: 3127



John Ambrose, MD, FACC
Cardiovascular Disease and Interventional Cardiology
Professor of Clinical Medicine, UCSF
Epic ID: 2072



Zaher Fanari, MD, FACC, FSCAI, FABVM
Cardiovascular Disease and Interventional Cardiology



Richard Kiel, MD
Cardiovascular Disease and Advanced Heart Failure and Transplant
Assistant Clinical Professor, UCSF
Medical Director, Advanced Heart Failure, UCSF Fresno
Associate Program Director, Adult Cardiovascular Disease Fellowship, UCSF Fresno
Epic ID: 8955



Siri Kunchakarra, MD
Cardiovascular Disease, Cardio-Oncology, Cardiac MR/CT, and Non-Invasive/Advanced Imaging
Assistant Clinical Professor, UCSF
Director, Cardio-Oncology, UCSF Fresno
Epic ID: 716118



Felice Lin, MD
Cardiovascular Disease and Advanced Heart Failure and Transplant
Assistant Clinical Professor, UCSF
Epic ID: 715701



Mouatou Mouanoutoua, MD
Cardiovascular Disease and Interventional Cardiology
Associate Clinical Professor, UCSF
Program Director, Interventional Cardiovascular Fellowship, UCSF Fresno
Epic ID: 2062



Henning Rasmussen, MD
Cardiovascular Disease and Interventional Cardiology
Associate Clinical Professor, UCSF
Epic ID: 4334



Ankit Rathod, MD
Cardiovascular Disease, Cardiac MR/CT, Non-Invasive/Advanced Imaging
Assistant Clinical Professor, UCSF
Director, Non-Invasive Cardiology
Program Director, Advanced Cardiac Imaging, UCSF Fresno
Epic ID: 704706



Rohit Srivastava, MD, FACC, FSCAI
Cardiovascular Disease and Interventional/Structural Cardiology
Associate Clinical Professor, UCSF
Director, Interventional Cardiology
Co-Medical Director, Cardiac Catheterization Lab
Epic ID: 712316



Brandon Woodbury, MD
Cardiovascular Disease, Cardiac Device Implantation/Extraction, Electrophysiology
Assistant Clinical Professor, UCSF
Director, Electrophysiology, UCSF Fresno
Epic ID: 712320

ADVANCED PRACTITIONER CARE TEAM



Flora David, NP-C
Cardiovascular Disease and Heart Failure



Kara Merritt, FNP-C
Cardiovascular Disease and Arrhythmia/Device Monitoring



Jonathan Wylie, NP-C
Cardiovascular Disease and Heart Failure

In affiliation with UCSF Fresno

We offer personalized, high-quality care to help patients improve their hair, nail, and skin health.

Referral Information

Please call the office directly or use the fax referral form.

Downloadable Fax Referral Form
universitymds.info/derm

Office: 559.266.4100
Referral Fax 559.266.4199



2335 E. Kashian Lane, Suite 410
 Fresno, CA 93701

Office Directions



Services

- **Adolescent/pediatric dermatology**
(newborn to 18-years-old)
- **Cosmetic dermatology**
- **Dermatology surgery**
- **General dermatology**
- **Mohs micrographic surgery**
 We are one of a limited number of practices in the Central Valley to offer Mohs surgery by a board-certified dermatologist. Mohs surgery involves removing skin cancers on areas of the body (ears, nose, near eyes) where it is especially desirable to preserve as much normal skin tissue as possible. The Mohs surgeon acts as both surgeon and pathologist at the microscope, taking care to confirm all skin cancer is removed before the skin is surgically repaired – all on the same day. This procedure has been shown to limit recurrent skin cancers and preserves as much normal anatomy and skin as possible. Clinical studies have shown that Mohs surgery provides five-year cure rates approaching 99% for new cancers and 95% for recurrent cancers.
- **Photodynamic therapy**
 This treatment combines drug therapy with light energy to treat diseases in a targeted way. The patient first takes a drug called a photosensitizer. Then the physician uses a laser, or similar device, to apply a specific wavelength of light energy, which activates the drug in the desired location. Photodynamic therapy can be used to treat various diseases, including cancer, acne, and some bacterial, fungal, and viral infections.
- **Phototherapy**
 Phototherapy or light therapy involves exposing the skin to ultraviolet light on a regular basis to help treat skin problems like psoriasis and eczema. University Dermatology Associates provides medical supervision for phototherapy or works with patients to complete the therapy at home using a portable phototherapy unit.



In affiliation with UCSF Fresno

MEDICAL DIRECTOR



Greg Simpson, MD
 Adult and Pediatric Dermatology
 Associate Clinical Professor, UCSF
 Epic ID: 2688



Luis A. Dehesa, MD
 Mohs Surgery
 and Dermatology
 Assistant Clinical Professor, UCSF
 Board Certified, Mohs
 Micrographic Surgery
 Epic ID: 706906
 Additional language(s): Spanish

ADVANCED PRACTITIONER CARE TEAM



Coming Soon!
David Mapes, PA-C
 Dermatology



Sheila Mayo, PA-C, MMSC
 Dermatology



In affiliation with UCSF Fresno

We provide exceptional care in the areas of diabetes, endocrinology, thyroid, and osteoporosis treatment.

Epic Referral Information

Diabetes & Endocrine REF22

Department Name UCSF F UDES

Downloadable Fax Referral Form

<http://universitymds.info/diabetes-endo>

Office 559.323.9236

Referral Fax 559.323.0294



7085 N. Chestnut Avenue, Suite 101
Fresno, CA 93720

Office Directions



Virtual Office Tour



Services

- Diabetes consultation, treatment, and management
- Endocrine disease treatment and management
- Insulin pump and continuous glucose monitoring
- Insulin pump clinic
- Osteoporosis care, including bone density screenings (DEXA)
- Pregnancy with diabetes clinic
- Thyroid treatment
- Thyroid ultrasound and biopsy
- Weight management

Programs

- Diabetes education classes
- Individualized dietary consultations and classes



In affiliation with UCSF Fresno

MEDICAL DIRECTOR



Varsha Babu, MD
Endocrinology, Diabetes, and Internal Medicine
Associate Clinical Professor, UCSF
Director, Division of Endocrinology
Director, Insulin Pump and CGM Clinic
Epic ID: 712313

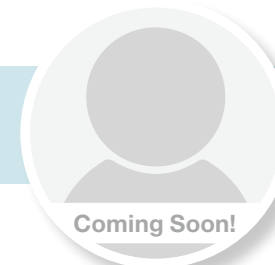


Glenn Matfin, MD, MSc (Oxon), MB ChB, FRCP (Edin)
Endocrinology, Diabetes, and Internal Medicine
Professor of Clinical Medicine, UCSF
Chief of Medicine, UCSF Fresno
Vice-Chair of Medicine, UCSF Department of Medicine
Epic ID: Coming soon!



Shreela Mishra, MD
Endocrinology, Diabetes, and Internal Medicine
Assistant Clinical Professor, UCSF
Director, Diabetes in Pregnancy and GDM Clinic
Director, FHCN
Epic ID: 712314
Additional language(s): Hindi

ADVANCED PRACTITIONER CARE TEAM



Coming Soon!
Victoria Brown, FNP
Diabetes/Endocrinology



April Herd, PA-C, CDCE
Diabetes/Endocrinology
Lead Staff for Diabetes Education Classes



Melody Kuo, PA-C, MHS
Diabetes/Endocrinology



REGISTERED DIETICIANS

Elsa Carrillo, MS, RDN
Registered Dietitian Nutritionist

Katey Spach, MS, RDN, CDCES
Registered Dietitian Nutritionist

In affiliation with UCSF Fresno

We specialize in finding safe solutions to disorders of the gastrointestinal tract, liver, gallbladder, and pancreas.

Epic Referral Information

Gastroenterology REF505

Hepatology REF873

Department name UCSF F UGHA

Downloadable Fax Referral Form

<http://universitymds.info/gastro-hep>

Office 559.320.1090

Referral Fax 559.320.0331



2335 E. Kashian Lane, Suite 280
Fresno, CA 93701

Office Directions



Services

Gastroenterology

- Colonoscopy
- Endoscopic retrograde cholangiopancreatography
- Endoscopic ultrasound
- Flexible sigmoidoscopy
- Gluten-related disorders
- Push enteroscopy
- Radiofrequency ablation for Barrett's Esophagus
- Upper endoscopy

Hepatology

- Alcohol-induced liver disease
- Autoimmune liver disease diagnosis and management
 - Autoimmune hepatitis (AIH)
 - Primary biliary cholangitis (PBC)
 - Primary sclerosing cholangitis (PSC)
- Cirrhosis evaluation and management
 - Ascites
 - Esophageal varices
 - Hepatic encephalopathy
 - Pre-transplant care
 - Referral for transplant evaluation
- Drug (prescription, dietary supplement) induced liver injury
- Evaluation of abnormal liver function tests, including Fibroscan and liver biopsy
- Liver tumor evaluation
- Non-alcoholic fatty liver disease (NAFLD and NASH)
- Viral hepatitis diagnosis and management including in pregnancy and post-partum



In affiliation with UCSF Fresno

MEDICAL DIRECTOR



Juliana Yang, MD
Gastroenterology and Advanced Endoscopy

Assistant Clinical Professor, UCSF
Division Chief, Gastroenterology, Hepatology & Nutrition, UCSF Fresno
Medical Director, University Gastroenterology & Hepatology
Epic ID: 723642



Jaya Krishna Chintanaboina, MD, MPH, FACP
Gastroenterology and Advanced Endoscopy

Associate Clinical Professor, UCSF
Director, Endoscopy
Associate Program Director, Gastroenterology Fellowship, UCSF Fresno
Epic ID: 714975
Additional language(s): Telugu



Marina Roytman, MD, FACP
Hepatology and Internal Medicine

Clinical Professor, UCSF
Director, Liver Program, UCSF Fresno
Epic ID: 709206
Additional language(s): Russian

ADVANCED PRACTITIONER CARE TEAM



Timothy Caminata, NP-C
Gastroenterology



In affiliation with UCSF Fresno

We offer high-quality, comprehensive care to patients with chronic conditions and multiple comorbidities.

Epic Referral Information

Internal Medicine Dept No. N/A
Department name UCSF F UMA INT MED

Special Services REF37
Department name UCSF F UMA SS

Rheumatology REF787
Department name UCSF F URA

Downloadable Fax Referral Form
<http://universitymds.info/med>

Office 559.320.1090
Referral Fax 559.320.0331



2335 E. Kashian Lane, Suite 280
Fresno, CA 93701

Office Directions



Services

Services provided by our **internal medicine** and **rheumatology** providers include, but are not limited to:

- Abscess drainage
- Annual exams
- Autoimmune and musculoskeletal disease evaluation
- Chronic disease management (COPD, high blood pressure, diabetes)
- Cryotherapy for warts or other benign skin conditions
- Electrocardiogram (EKG)
- Joint injections
- Minor injury and illness
- Musculoskeletal disorder evaluation
- Sports medicine exams
- Unusual disease diagnosis



In affiliation with UCSF Fresno



Alan Kelton, MD
Internal Medicine
Clinical Professor, UCSF
Medical Director, Medicine Department,
University Centers of Excellence Operations
Epic ID: 8352
Additional language(s): Medical Spanish



Michele Maison-Fomotar, MD
Infectious Disease
Assistant Clinical Professor, UCSF
Epic ID: 706368
Please contact the office regarding referral availability.



Hebah Ghanem, MD
Infectious Disease
Assistant Clinical Professor, UCSF
Epic ID: 714266
Please contact the office regarding referral availability.



Seema Policepatil, MD, MBA, FACP
Internal Medicine
Assistant Clinical Professor, UCSF
Epic ID: 713504
Additional language(s): Hindi and Kannada



Teresa Sigala, MD
Internal Medicine
Assistant Clinical Professor, UCSF
Epic ID: 704437
Additional language(s): Spanish



Tia Vang, MD
Internal Medicine
Assistant Clinical Professor, UCSF
Epic ID: 721444
Additional language(s): Hmong, and conversational Thai



Anshu Varma, MD
Internal Medicine
Assistant Clinical Professor, UCSF
Epic ID: 712877
Additional language(s): Hindi

University

Rheumatology Associates

In affiliation with UCSF Fresno



Alicia Rodriguez Pla, MD, PhD, MPH
Rheumatology

ADVANCED
PRACTITIONER
CARE TEAM



Sirvard "Sarah" Kaptryan, NP-C
Rheumatology

In affiliation with UCSF Fresno

We provide the latest advances in obstetrics and gynecological treatment and technology coupled with a warm, friendly atmosphere.

Epic Referral Information

Ob/Gyn REF51

Department name UCSF F UOGC

Downloadable Fax Referral Form

<http://universitymds.info/ob-gyn>

Office 559.443.2694

Referral Fax 559.443.2696



2210 E. Illinois Avenue, Suite 408
Fresno, CA 93701

Office Directions



Services

Our comprehensive **obstetrical** and **gynecologic care** includes some of the following services:

- Abdominal pain
- Adolescent pregnancy
- Birth defects involving reproductive organs
- Breast abnormalities – asymmetry or pain
- Chronic genital rashes or itching
- Heavy, frequent, or painful menstrual periods
- Injuries involving reproductive organs
- Irregular or infrequent menstrual periods
- Ovarian cysts
- Pelvic endometriosis
- Pelvic masses
- Signs of delayed sexual maturation
- Signs of early sexual maturation
- Unusual appearance of the genitals



In affiliation with UCSF Fresno

MEDICAL DIRECTOR



Pamela Emeney, MD, RN, FACOG

Obstetrics and Gynecology
Adolescent Healthcare
Associate Clinical Professor, UCSF
Epic ID: 2450



Christopher Downer, MD

Obstetrics and Gynecology
Associate Clinical Professor, UCSF
Director, Obstetrics, UCSF Fresno
Director, Obstetrics & Gynecology
Residency Program, UCSF Fresno
Epic ID: 8752



Ellen Middleton, PhD, NP, RN

Obstetrics and Gynecology
Volunteer, Clinical Instructor, UCSF
Epic ID: 1625



ADVANCED PRACTITIONER CARE TEAM

Melanie King, NPF-C, MSN, RN

Obstetrics and Gynecology





Epic Referral Information

Adult Orthopaedics REF507
Department name UCSF F ORTHO

Pediatric Orthopaedics REF79
Department name UCSF F ORTHO PEDS

Downloadable Fax Referral Form
<http://universitymds.info/ortho>

Office 559.320.0531
Referral Fax 559.432.3025
Office Fax 559.320.0539



604 N Magnolia Avenue, Suite 100
Clovis, CA 93611

Office Directions



Virtual Office Tour



Services

- Acute and chronic traumatic injuries and sequelae
- Degenerative conditions
- Hand and upper extremity orthopaedic care
- Hip preservation and arthroscopy
- Hip and knee arthritic care, replacement, revisions and infections
- Joint injections
- Musculoskeletal conditions of the upper extremities, lower extremities, and pelvis
- Non-surgical musculoskeletal treatment and pain management
- Pediatric orthopaedic care
- Simple and complex fractures and dislocations
- Scoliosis
- Tendon, ligament, meniscal, and labral injuries

Walk-In Orthopaedic Urgent Care

- Cuts, lacerations, and fingertip injuries
- On-site casting and bracing
- On-site imaging
- Sports injuries



MEDICAL DIRECTOR



Eric Lindvall, DO
Fracture Care and Orthopaedic Trauma Surgery
Chief of Orthopaedics, UCSF Fresno
Clinical Professor, UCSF Epic ID: 1474

Coming Soon!

Keiko Amano, MD
Hand, Elbow, and Shoulder Orthopaedic Surgery



Raj M. Amin, MD
Joint Replacement and Revisions
Assistant Clinical Professor, UCSF
Epic ID: 721245



Mark Ayoub, MD
Fracture Care and Orthopaedic Trauma Surgery
Assistant Clinical Professor, UCSF
Epic ID: 709610
Additional language(s): Arabic



Deniz Baysal, MD, FRCSC
Hip and Knee Replacements and Fracture Care
Associate Clinical Professor, UCSF
Epic ID: 2353



Maximino Brambila, MD, MBA
Elbow, Hand, and Upper Extremity Orthopaedic Surgery
Assistant Clinical Professor, UCSF
Epic ID: 705306
Additional language(s): Spanish



Nathan Hoekzema, MD
Elbow, Hand, and Upper Extremity Orthopaedic Surgery
Associate Clinical Professor, UCSF
Epic ID: 3265



Robert Kollmorgen DO, FAAOS, FAOBOS
Hip Preservation and Sports Medicine
Assistant Clinical Professor, UCSF
Epic ID: 709717



Armen Martirosian, MD
Fracture Care and Orthopaedic Trauma Surgery
Associate Clinical Professor, UCSF
Director, Residency Program, UCSF Fresno
Epic ID: 2487



Arbi Nazarian, MD
Hip and Knee Reconstruction and Revisions
Assistant Clinical Professor UCSF
Epic ID: 8084
Additional language(s): Armenian, Farsi, and conversational Spanish



Motasem Refaat, MD
Fracture Care and Orthopaedic Trauma Surgery
Assistant Clinical Professor, UCSF
Epic ID: 709647
Additional language(s): Arabic



Geoffrey Rohlfing, DO
Hip and Knee Reconstruction and Revisions
Assistant Clinical Professor, UCSF
Epic ID: 703310



Lucas Seiler, MD
Hand Surgery
Assistant Clinical Professor, UCSF
Epic ID: 9973



John Wiemann, MD
Pediatric Orthopaedics, Sports Medicine, and Scoliosis
Associate Clinical Professor, UCSF
Epic ID: 705852



Spencer Woolwine, MD
Musculoskeletal Oncology

ADVANCED PRACTITIONER CARE TEAM



Christina Furrer, PA-C
Orthopaedic Surgery



Morgan Kelly, PA-C
Orthopaedic Surgery



Simon Mizyed, PA-C
Orthopaedic Surgery



Caroline Urbanek, PA-C
Orthopaedic Surgery



Cristina Vega, PA-C
Orthopaedic Surgery

In affiliation with UCSF Fresno

We bring the highest level of psychiatric services to the Central Valley.

Epic Referral Information

Psychiatry REF91
Department name UCSF F UPA

Downloadable Fax Referral Form
<http://universitymds.info/psych>

Office 559.320.0580
Referral Fax 559.320.0582



2210 E. Illinois Avenue, Suite 401
Fresno, CA 93701

Office Directions



Services

Our comprehensive **psychiatric management plans** help patients understand and cope with their conditions and take steps to get back to their normal daily life.

- Psychiatric diagnostic evaluation and consultation
- Adult and pediatric psychiatric management
- Adult and pediatric psychotherapy management
- Group therapy
- Individual psychotherapy
- Psychopharmacologic treatment



In affiliation with UCSF Fresno

MEDICAL DIRECTOR



Craig Campbell, MD, MS, FAPA
Psychiatry
Clinical Professor, UCSF
Director, Psychiatry Residency Program,
UCSF Fresno
Epic ID: 1211



Nicholas Betchel, DO
Psychiatry
Epic ID: Coming Soon!
Please contact the office regarding referral availability.



Karen Kraus, MD
Psychiatry
Associate Clinical Professor, UCSF
Director, Child and Adolescent
Psychiatry, UCSF Fresno
Epic ID: 9001



Betty Liao, PhD
Psychiatry
For appointments with
Betty Liao, PhD,
please call 559.499.6689
Cash pay only



In affiliation with UCSF Fresno

We provide high-quality, compassionate patient care for individuals with lung-related conditions.

Epic Referral Information

Pulmonary REF94
Department name UCSF F PULMONARY

Downloadable Fax Referral Form
<http://universitymds.info/pulm>

Office 559.256.5130
Referral Fax 559.485.4504



2335 E. Kashian Lane, Suite 260
Fresno, CA 93701

Office Directions



Disease Management

- Asthma
- Chronic obstructive pulmonary disease (COPD)
- Cystic fibrosis
- Infectious pulmonary processes
- Interstitial lung disease
- Lung disease secondary to collagen-vascular disorders
- Lung nodules
- Occupational and environmental lung disease
- Pulmonary embolism
- Pulmonary vascular disease – including pulmonary hypertension
- Sarcoidosis
- Unexplained chronic cough
- Unexplained shortness of breath

Diagnostic Testing

- Pulmonary function testing
 - Spirometry
 - Lung volume
 - Diffusion
 - Six-minute walk with oxygen titration

Pulmonary Services

- Pulmonary rehabilitation
- Smoking cessation



MEDICAL DIRECTOR



Vipul Jain, MD, MS
Pulmonary Disease and Critical Care Medicine
Clinical Focus: Asthma
Executive Vice Chief of Medicine, UCSF Fresno
Chief, Division of Pulmonary and Critical Care Medicine
Professor of Clinical Medicine, UCSF
Epic ID: 8420



Waqas Aslam, MD
Pulmonary Disease, Critical Care Medicine, Interventional Pulmonology
Assistant Clinical Professor, UCSF
Co-Director, Lung Nodule Program
Epic ID: 717387



Hila Azulay, MD
Pulmonary Disease and Critical Care Medicine
Assistant Clinical Professor, UCSF



Vijay Balasubramanian, MD, FCCP, MRCP
Pulmonary Disease and Critical Care Medicine
Clinical Focus: Pulmonary Hypertension
Clinical Professor, UCSF
Medical Director, Pulmonary Hypertension Program
Epic ID: 2176



Matt Beutner, MD
Pulmonary Disease and Critical Care Medicine
Assistant Clinical Professor, UCSF



Kathryn Bilello, MD
Pulmonary Disease and Critical Care Medicine
Clinical Focus: Lung Cancer
Clinical Professor, UCSF
Program Director, Pulmonary Disease/Critical Care Fellowship, UCSF Fresno
Epic ID: 0748



June Choe, MD
Pulmonary Disease and Critical Care Medicine
Clinical Focus: Lung Cancer
Assistant Clinical Professor, UCSF
Epic ID: Coming Soon!



Mohamed Fayed, MD
Pulmonary Disease and Critical Care Medicine
Clinical Focus: Advanced Lung Infections
Assistant Clinical Professor, UCSF
Co-Director, Lung Nodule Program
Epic ID: 9993



Anil K. Ghimire, MD
Pulmonary Disease and Critical Care Medicine
Clinical Focus: COPD and Adult Cystic Fibrosis
Associate Clinical Professor, UCSF
Director, Adult Cystic Fibrosis Medical Director, Chronic Lung Disease Program
Associate Program Director, Pulmonary Disease/Critical Care Fellowship, UCSF Fresno
Epic ID: 714737



Pravachan V.C. Hegde, MD
Pulmonary Disease, Critical Care Medicine, and Interventional Pulmonology
Assistant Clinical Professor, UCSF
Director, Interventional Pulmonology Program
Epic ID: 704703



Michael W. Peterson, MD
Pulmonary Disease and Critical Care Medicine
Associate Dean for Undergraduate Medical Education and Research, UCSF Fresno
Professor of Medicine, UCSF
Epic ID: 1697

ADVANCED PRACTITIONER CARE TEAM



Robert Kelleher, PhD, AGACNP-BC
Pulmonology



Coralee Koning, DMSc, PA-C, DFAAPA
Pulmonary Hypertension



Robin McBride, MSN, FNP-C
Pulmonology



Kerstyn O'Brien, PA-C
Advanced Lung Infection and Chronic Lung Disease



Krystal Rodriguez, NP-C
Pulmonology



Monica Windsor, DNP, FNP-BC, RN, MSN, CNS
Pulmonary Hypertension Program Coordinator



Judy Xiong, MSN, FNP-C
Pulmonology

In affiliation with UCSF Fresno

We now offer Inspire® the hypoglossal nerve stimulator. Inspire® is a new, FDA approved, maskless treatment for patients struggling with sleep apnea.

Epic Referral Information

Sleep REF727

Epic Department Name UCSF F USPA Sleep

Pulmonary REF94

Epic Department Name UCSF F USPA Pulmo

Downloadable Fax Referral Form

<http://universitymds.info/sleep-pulm>

Office 559.435.4700

Referral Fax 559.298.7951



6733 N. Willow Avenue, Suite 107
Fresno, CA 93710

Office Directions



Virtual Office Tour



Pulmonary Services

- Asthma
- Chronic obstructive pulmonary disease
- Cystic fibrosis management
- Infectious pulmonary processes
- Interstitial lung disease
- Advanced diagnostic and interventional bronchoscopy
- Lung disease secondary to collagen-vascular disorders
- Lung nodules and cancer diagnosis
- Pulmonary hypertension
- Sarcoidosis

Sleep Services

- Circadian rhythm disorder
- Insomnia
- Inspire® treatment
- Narcolepsy
- Nocturnal hypoventilation syndromes
- Obstructive and central sleep apnea
- Pediatric sleep studies (8 years and older)
- Restless leg syndrome and periodic limb movement disorder



In affiliation with UCSF Fresno

MEDICAL DIRECTOR
Sleep Medicine



Lynn Keenan, MD, FAASM

Sleep Medicine
Clinical Professor, UCSF
Epic ID: 5810

MEDICAL DIRECTOR
Pulmonary



Karl Van Gundy, MD, FACP
Pulmonary Disease, Critical Care, and Sleep Medicine

Clinical Professor, UCSF
Epic ID: 4659



Eyad Almasri, MD
Pulmonary Disease, Critical Care Medicine, and Sleep Medicine

Assistant Dean of Research, UCSF Fresno
Associate Clinical Professor, UCSF
Epic ID: 2664



Hovig Artinian, MD
MAT, FAAP
Pediatric Pulmonary Disease, Critical Care, and Sleep Medicine

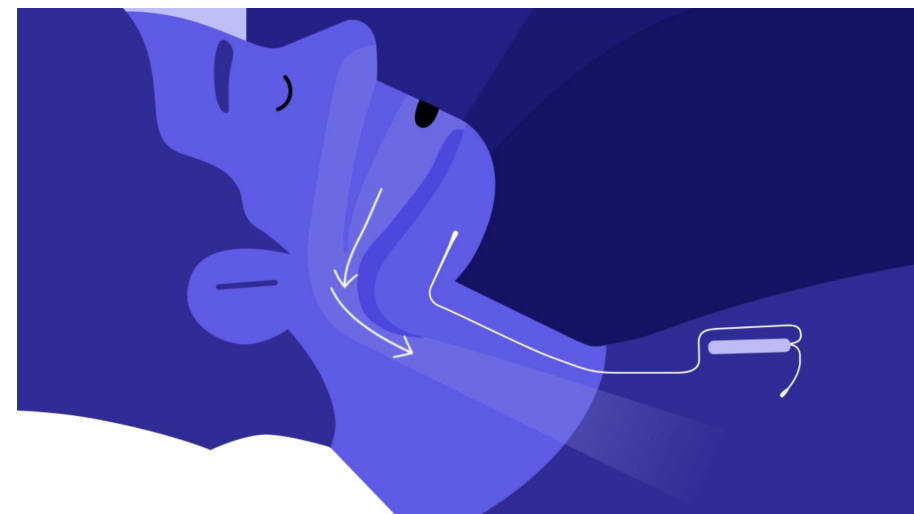


Lourdes DelRosso MD, MS
Pulmonary Disease, Critical Care, and Sleep Medicine

ADVANCED
PRACTITIONER
CARE TEAM



Patricia Gresham, NP
Sleep Medicine



All images ©Inspire Sleep Apnea Innovation®

In affiliation with UCSF Fresno

We provide comprehensive women's medical care, including the management of complicated, high-risk pregnancies.

Epic Referral Information

Women's Specialty REF86
Epic Department Name UCSF F UWSC

Downloadable Fax Referral Form
<http://universitymds.info/womens>

Office 559.320.0555
Referral Fax 559.320.0558



2210 E. Illinois Avenue, Suite 301
Fresno, CA 93701

Office Directions



Services

- High-risk pregnancy care** includes, but is not limited to:
- 3D and 4D ultrasounds
 - Antepartum testing – AFI, BPP on site
 - Cervical length during pregnancy
 - Diabetes management while pregnant
 - Doppler assessment of fetal vessels
 - Fetal complications and anomalies
 - Gestational diabetes management
 - Level 1 – dating and growth
 - Level 2 – high resolution anatomy
 - Nuchal translucency
 - Pre-conceptual counseling
 - Prenatal diagnosis and genetics
 - RH disease, isoimmunization
 - Vaginal ultrasound

- Accredited Ultrasound Practice** services include:
- Fetal anatomic ultrasound
 - Fetal echocardiography
 - Standard full-term ultrasound



In affiliation with UCSF Fresno



MEDICAL DIRECTOR

Brian Morgan, MD, PhD
Perinatology – Maternal-Fetal Medicine
Clinical Professor, UCSF
Epic ID: 2092



Valley Vascular Surgery Associates

In affiliation with UCSF Fresno

We specialize in the field of vascular surgery and endovascular therapy, achieving exceptional outcomes through the use of advanced procedures and technologies.

Epic Referral Information

Vascular Surgery REF108

Epic Department Name UCSF F VVSA S

Downloadable Fax Referral Form

<http://universitymds.info/vasc>

Office 559.431.6226

Referral Fax 559.440.9005



1247 E. Alluvial Avenue, Suite 101
Fresno, CA 93720

Office Directions



Virtual Office Tour



Services

- Amputation prevention
- Anterior spine exposure
- Aortic dissection
- Carotid artery disease
- Chronic lower extremity wounds
- Complex endovascular aortic aneurysm repair
- Complex limb revascularization
- Complex open aortic surgery
- Dialysis access grafts
- Limb salvage
- Lower extremity amputation
- Mesenteric artery disease
- Sclerotherapy
- Thoracic and abdominal aortic aneurysms
- Thoracic outlet syndrome
- Varicose veins
- Venous insufficiency
- Venous leg ulcers

Programs

- Wound care services
- Wound management



Valley Vascular Surgery Associates

In affiliation with UCSF Fresno

MEDICAL DIRECTOR



Randall Stern, MD, FACS
Vascular Surgery and
Endovascular Intervention
Clinical Professor, UCSF
Epic ID: 4436



Kamell Eckroth-Bernard, MD
Vascular Surgery and
Endovascular Intervention
Associate Clinical Professor, UCSF
Epic ID: 8753



Yan Cho, DO, RPVI
Vascular Surgery and
Endovascular Intervention



Leo Fong, MD
Vascular Surgery and
Endovascular Intervention
Assistant Clinical Professor, UCSF
Epic ID: 4983



Philip Hinton, MD
Vascular Surgery and
Endovascular Intervention
Associate Clinical Professor, UCSF
Epic ID: 1362



**Leigh Ann O'Banion, MD,
FACS, FSVS, RPVI**
Vascular Surgery and
Endovascular Intervention
Assistant Clinical Professor, UCSF
Epic ID: 9477



Anne Prentice, MD, FACS
Vascular Surgery and
Endovascular Intervention
Assistant Clinical Professor, UCSF
Epic ID: 0036



Sammy Siada, DO, RPVI
Vascular Surgery and
Endovascular Intervention
Assistant Clinical Professor, UCSF
Epic ID: 8212

ADVANCED PRACTITIONER CARE TEAM



Robert Baber, PA-C
Vascular Medicine



Maria "Mia" McKnight, NP
Vascular Medicine

UCSF Faculty in the Community

For more than 40 years, CCFMG has worked with local hospitals, health care facilities, and Fresno County to establish partnerships that allow patients to receive the specialty care they need and deserve. In addition to the **University Centers of Excellence**, CCFMG's faculty physicians see patients in various outpatient clinics.

The following are just a few of the locations in which you can see an expert CCFMG, UCSF faculty physician. For more information about our local health care partners, please visit our website **UniversityMDs.com**.



Clinics at the Family HealthCare Network

CCFMG's affiliation with the Family HealthCare Network ensures patients across the Valley have access to the care they need regardless of their situation. Our expert faculty physicians provide a wide range of specialty services to patients through this vital partnership.



Deran Koligian Ambulatory Care Center Family HealthCare Network

290 N. Wayte Lane
Fresno, CA 93701
866.342.6012

- Behavioral Health
- Disease Management
- Family Practice
- Internal Medicine
- Pediatrics
- Prompt Care Walk-in Health Center
- Special Services (HIV/AIDS)
- Women's Health



Family HealthCare Network Disease Management Center

2315 E Illinois Ave
Fresno, CA 93701
866.342.6012

- Acute Disease Management
- Chronic Disease Management



Family HealthCare Network Surgical Services Center

255 Herwaldt Drive
Fresno, CA 93701
559.459.7300

- Breast
- Endocrine Surgery
- Pediatric Surgery
- General Surgery
- Hepatobiliary Surgery
- Orthopaedic
- Trauma
- Urology
- Vascular Surgery

CCFMG Providers at Community Cancer Institute



785 Medical Center Drive West, Suite 203
Clovis, CA 93611

For referrals, please call:
559.387.1900
Fax: 559.387.1950

Services

- Access to clinical trials
- Extensive support services
- Genetic counseling and testing
- Imaging
- Infusion center
- Medical oncology
- Radiation oncology
- Radiation therapy

Most insurances accepted



Haifaa Abdulhaq, MD
Hematology and Oncology
Clinical Professor, UCSF
Director, Division of Hematology, UCSF Fresno
Program Director, Hematology/Oncology Fellowship, UCSF Fresno



Mohammed Sani Bukari, MD
Hematology and Oncology
Assistant Clinical Professor, UCSF



Uzair Chaudhary, MD
Hematology and Oncology
Chief of Hematology and Oncology, UCSF Fresno
Clinical Professor of Medicine, UCSF



Alireza Soleimani Fard, MD
Hospice and Palliative Care
Assistant Clinical Professor, UCSF



Sanjay Hinduja, MD
Hematology and Oncology
Associate Clinical Professor, UCSF



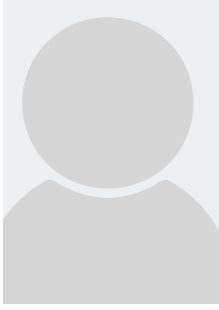
Omer Ilyas, MD
Hematology and Oncology
Assistant Clinical Professor, UCSF



Patrick Macmillan, MD, FACP
Hospice and Palliative Care
Chief of Hospice and Palliative Care, UCSF Fresno
Associate Clinical Professor, UCSF



Constance Stoehr, MD
Hematology and Oncology
Assistant Clinical Professor, UCSF



Stephanie Kapsimallis, NP-C
Hematology and Oncology



Jennifer Lallo, NP-C, AOCNP
Hematology and Oncology



Stephanie Mercado, PA-C
Hematology and Oncology

CCFMG Providers at Community Pediatric Specialists



Clovis
Community Pediatric Specialists
726 Medical Center Drive East, Suite 209
Clovis, CA 93611
Tel: 559.325.5656
Fax: 559.325.5568

Fresno
Community Pediatric Specialty Center
215 N. Fresno Street, Suite 370
Fresno, CA 93701
Tel: 559.459.4543
Fax: 559.4591539

For referrals, please call:
559-459-BEAR (2327)
Fax 559.459.1539

Services

- Cardiology
- Endocrinology
- Gastroenterology
- Genetics
- Infectious Disease
- Nephrology
- Neurology
- Pulmonology
- Child Psychiatry

Most insurances accepted



Medical Director
John Moua, MD
Pediatric Pulmonology
Chief of Pediatrics, UCSF Fresno
Associate Clinical Professor
Clovis and Fresno



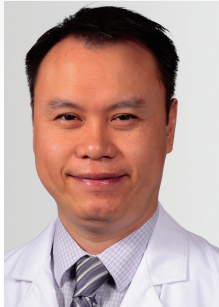
Elizabeth Black, MD
Pediatric Nephrology
Assistant Clinical Professor, UCSF Fresno
Fresno



Ana Coll, MD
Pediatric Cardiology
Associate Clinical Professor, UCSF Fresno
Fresno



Cynthia Curry, MD
Genetics
Professor Emeritus, UCSF Fresno
Fresno



Paul Do, MD
Pediatric Pulmonology
Assistant Clinical Professor, UCSF
Clovis and Fresno



Timothy C. Foster, MD
Pediatric Neurology Neurodevelopmental Disabilities
Voulnteer, Assistant Clinical Professor, UCSF
Clovis and Fresno



Renee Kinman, MD, PhD
Pediatric Endocrinology
Associate Clinical Professor, UCSF
Clovis and Fresno



Manish Malkar, MD, MPH, FAAP
Pediatric Cardiology
Associate Clinical Professor, UCSF
Clovis and Fresno



Richard Quan, MD
Pediatric Gastroenterology
Clinical Professor, UCSF
Fresno



Chokechai Rongkavilit, MD (Dr. Chai)
Pediatric Infectious Disease
Clinical Professor, UCSF
Clovis and Fresno



Patrick Shea, MD
Child Psychiatry
Assistant Clinical Professor, UCSF
Clovis and Fresno



CCFMG Providers at Community Gynecologic Oncology Specialists



782 Medical Center Drive East, Suite 212
Clovis, CA 93611

Tel: 559.451.3676
Fax: 559.451.3680

Services

- Cancer Support Services
- Consultations for medically complex gynecologic situations
- Genetic counseling and testing
- Nurse Navigation
- Palliative Care
- Treatment and management of cancers and pre-cancers of the:
 - Cervix
 - Fallopian tube/peritoneum
 - Ovaries
 - Pregnancy related malignancy
 - Uterus
 - Vagina
 - Vulva
- Treatment options include:
 - Brachytherapy
 - Chemotherapy
 - Clinical trials
 - CyberKnife
 - HIPEC
 - Radiation Therapy
 - Surgery
 - Target therapy/immunotherapy

Most insurances accepted



Medical Director

Trung "Tim" Nguyen, DO, MBA
Gynecologic Oncology
Assistant Clinical Professor, UCSF



Dennis DeSimone, DO
Gynecologic Oncology
Assistant Clinical Professor, UCSF



Alexandra "Jana" Freeman, MD
Gynecologic Oncology
Assistant Clinical Professor, UCSF



Advanced Practitioner Care Team

Tami Biesenthal, NP-C
Gynecologic Oncology

Resources

- **National Cancer Institute** – cancer.gov
- **American Cancer Society** – cancer.org
- **Foundation for Women's Cancer** – foundationforwomenscancer.org
- **Art of Life Cancer Foundation** – artoflifecancer.org
- **Look Good Feel Better Programs** – lookgoodfeelbetter.org

CCFMG Providers at Community Specialty Surgery Associates

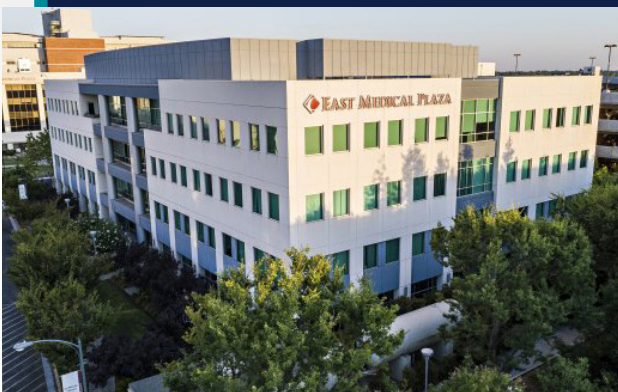


Medical Director

Amir Fathi, MD, FACS
Hepato-Pancreato - Biliary Surgery
General Surgery
Assistant Clinical Professor, UCSF



Farah Karipineni, MD, MPH, FACS
General Surgery, Endocrine Surgery, and Surgical Management of thyroid, parathyroid, adrenal, and pancreatic diseases
Assistant Clinical Professor, UCSF



2335 E. Kashian Lane, Suite 220
Fresno, CA 93701

Tel. 559.256.5140
Fax. 559.485.4505

Services

- Endocrine
- General surgical procedures
- Scarless thyroidectomy
- Minimally invasive hernia repair

Surgical Management of Diseases and Treatment of the:

- Acute and chronic pancreatitis
- Adrenal Glands
- Biliary tree
- Foregut
- Gallbladder
- Liver
- Parathyroid
- Pancreas
- Stomach
- Thyroid

Programs

Hepato-Pancreato-Biliary (HPB) and Stomach Cancer Programs

Most insurances accepted



CCFMG Faculty Physicians in the News

CCFMG’s faculty physicians are the medical experts of the Central Valley. On a weekly basis, both local and national media outlets turn to our UCSF faculty practicing in Fresno for their expertise on trending health topics. In 2021, our physicians were interviewed by local media outlets like ABC 30, Fresno Bee, and KSEE24/CBS47, as well as national media outlets like the Los Angeles Times, and The Guardian.

Valley Doctor Urging Preventative Healthcare Visits Amid Pandemic



Mr. Miller was diagnosed with diabetes a decade ago, but last year had to undergo surgery... to have an ulcer removed from his right foot. “[Dr. Siada] tried to cut out what was infected, but it spread so much the next day, they let me know we’re going to have to amputate your entire leg,” Miller said. “So it was either that or die.”

Dr. Siada said Miller’s leg amputation could have been avoided. “Him being young and otherwise energetic, his diabetes became a secondary priority because he didn’t have access to healthcare and he couldn’t afford healthcare even if he wanted it,” he said.

“Now is a good time for many people who have diabetes, who have heart or other health issues, to see their doctor for check-ups they had put off in the past, especially if they are already vaccinated against COVID”, said Dr. Siada.



Sammy Siada, DO, RPVI
Assistant Clinical Professor, UCSF
Valley Vascular Surgery Associates

THE BUSINESS JOURNAL

Local Team of Hip, Knee Surgeons Improving Patient Quality of Life

“I genuinely feel there is a need for partial knee replacements which are less invasive, have a smaller incision and are a faster recovery than a total knee replacement. I also really enjoy the Direct Anterior Approach to Total Hip replacement, which has been described as muscle sparing, and has been shown to have a quicker recovery.”



Geoffrey Rohlfling, DO
Assistant Clinical Professor, UCSF
University Orthopaedic Associates



Vaccine hesitancy may be an issue in Fresno when younger kids can receive it

UCSF Fresno’s Dr. Kenny Banh requesting the authorization is good news for parents of young kids, but also good news for slowing the pandemic overall.

“If we’re tired of omicron, if we’re tired of delta, we don’t want to see zeta, we don’t want to see the next one, then this is what we have to do to keep it from cycling back again,” said Dr. Banh.

“We’re gonna get an initial rush, that 10-20-15 percent of people that are really eager to protect their kids and protect others,” said Dr. Banh. “But then it’s gonna be a hard push. It’s not an access issue now.”



Kenny Banh, MD
Assistant Clinical Professor, UCSF

Provider Index by Last Name

Abdelfattah, Hager, FNP	13	Furrer, Christina, PA-C	19	Morgan, Brian, MD	27
Abdulhaq, Haifaa, MD	32	Ghimire, Anil, MD	23	Moua, John, MD	34
Almasri, Eyad, MD	25	Gresham, Patty, NP	25	Mouanoutoua, Mouatou, MD	7
Ambrose, John, MD	7	Hegde, Pravachan, MD	23	Nazarian, Arbi, MD	19
Amin, Raj, MD	19	Herd, April, PA-C	11	Nguyen, Trung “Tim”, DO	36
Aslam, Waqas, MD	23	Hinduja, Sanjay, MD	33	O’Banion, Leigh Ann, MD	29
Ayoub, Mark, MD	19	Hinton, Philip, MD	29	O’Brien, Kerstyn, PA-C	23
Baber, Robert, PA-C	29	Hoekzema, Nathan, MD	19	Peterson, Michael, MD	23
Babu, Varsha, MD	11	Ilyas, Omer, MD	32	Panneerselvam, Priya, DO	17
Balasubramanian, Vijay, MD	23	Jain, Vipul, MD, MS	23	Policepatil, Seema, MD	15
Baysal, Deniz, MD	19	Kapsimallis, Stephanie, NP-C	33	Prentice, Anne, MD	29
Biesenthal, Tami, NP-C	36	Karipineni, Farah, MD	37	Quan, Richard, MD	35
Bilello, Kathryn, MD	23	Kazaryan, Anna, MD	15	Rasmussen, Henning, MD	7
Black, Elizabeth, MD	34	Keenan, Lynn, MD	25	Rathod, Ankit, MD	7
Beutner, Matt, MD	23	Kelton, Alan, MD	15	Refaat, Motasem, MD	19
Brambila, Maximino, MD	19	Kelley, Morgan, PA-C	19	Rohlfing, Geoffrey, DO	19
Bukari, Mohammed Sani, MD	32	Kiel, Richard, MD	7	Rongkavilit, Chokeychai, MD	35
Caminata, Timothy, NP-C	13	Kinman, Renee, MD	34	Roytman, Marina, MD	13
Campbell, Craig, MD	21	Kollmorgen, Robert, DO	19	Salter-Green, Ashley, NP	13
Chaudhary, Uzair, MD	33	Koning, Coralee, PA-C	23	Seiler, Lucas, MD	19
Chintanaboina, Jayakrishna, MD	13	Kraus, Karen, MD	21	Shea, Patrick, MD	35
Choe, June, MD	23	Kunchakarra, Siri, MD	7	Siada, Sammy, DO	29
Coll, Ana, MD	35	Lallo, Jennifer, NP-C	33	Sigala, Teresa, MD	15
Curry, Cynthia, MD	35	Liao, Betty, PhD	21	Simpson, Greg, MD	9
Daniele, Teresa, MD	7	Lin, Felice, MD	7	Srivastava, Rohit, MD	7
David, Flora, NP-C	7	Lindvall, Eric, DO	19	Stern, Randall, MD	29
Dehesa, Luis, MD	9	Macmillan, Patrick, MD	32	Stoehr, Constance, MD	33
DeSimone, Dennis, DO	36	Malkar, Manish, MD	35	Urbanek, Caroline, PA-C	19
Do, Paul, MD	35	Mapes, David, PA-C	9	Van Gundy, Karl, MD	25
Downer, Christopher, MD	17	Martirosian, Armen, MD	19	Vang, Tia, MD	15
Eckroth-Bernard, Kamell, MD	29	Matfin, Glenn, MD	11	Varma, Anshu, MD	15
Ehiorobo, Iziegbe, MD	15	Mayo, Sheila, PA-C	9	Vega, Cristina, PA-C	19
Emeney, Pamela, MD	17	McBride, Robin, FNP-C	23	Wiemann, John, MD	19
Fard, Alireza Soleimani, MD	33	McKnight, Maria “Mia”, NP	29	Windsor, Monica, DNP	23
Fathi, Amir, MD	37	Mercado, Stephanie, PA-C	33	Woodbury, Brandon, MD	7
Fayed, Mohamed, MD	23	Merritt, Kara, FNP-C	7	Wylie, Jonathan, NP-C	7
Fong, Leo, MD	29	Middleton, Ellen, PhD	17	Xiong, Judy, FNP-C	23
Foster, Timothy C., MD	34	Mishra, Shreela, MD	11	Yang, Juliana, MD	13
Freeman, Alexandra “Jana”, MD	36	Mizyed, Simon, PA-C	19		

Caring for today's patients. Teaching tomorrow's doctors.



65+

**Specialties and
Subspecialties,
Including:**

Cardiology	Pediatrics
Dermatology	Perinatology
Endocrinology	Psychiatry
Gastroenterology	Pulmonology
Hepatology	Rheumatology
Internal Medicine	Sleep Medicine
Obstetrics & Gynecology	Specialty Surgery
Oncology	Vascular Surgery
Orthopaedic Surgery	And more...

**Proudly Providing Expert
and Compassionate
Medical Care to Patients
of the Central Valley**



University | Centers of Excellence

In affiliation with UCSF Fresno



CCFMG
Central California Faculty Medical Group

2625 East Divisadero Street
Fresno, California 93721

559.453.5200 | UniversityMDs.com